



SPECTROGRAM FUNCTION

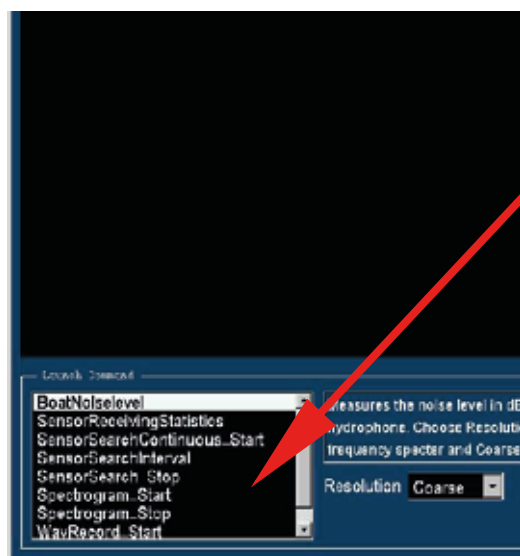
In the service console, different features can be chosen for scanning for boat codes, channels and noise.

Press to  enter the Configuration screen.



1. Select the Service sheet. 

2. Press Console. 



Different features can be run for doing different tests on the system. The command is picked from the list and started by clicking "Run".

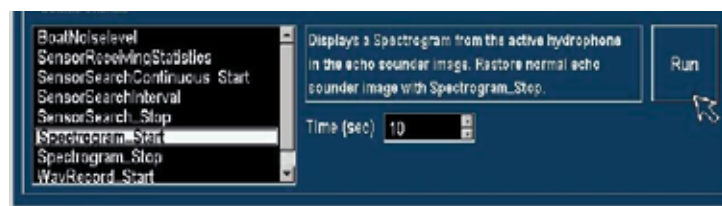
Some commands has settings that can be set according to how you want it. See the most important ones described on the next pages.


SPECTROGRAM FUNCTION

SensorSearchCont_Start

The spectrogram is useful for detecting noise from propeller, sonar's and echo sounders. Problems with interference and hydrophones can also be detected and analysed with a spectrogram.

Select Spectrogram_Start,
 set time in seconds and press
 Run.



The spectrogram is shown in the echo sounder image, click OK to leave the console and press  to get back to the main screen. Select the echo sounder image.

Comments to Echo Sounder Image:
 Yellow dots marked

1. is pings from a sensor transmitting on approx 42 kHz.
2. shows the signal from a trawl eye programmed as Normal band.

