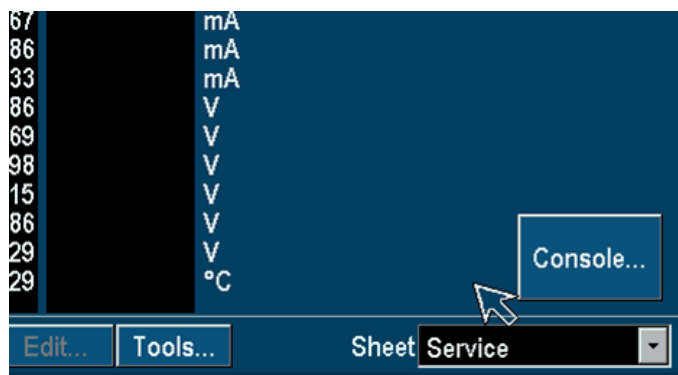





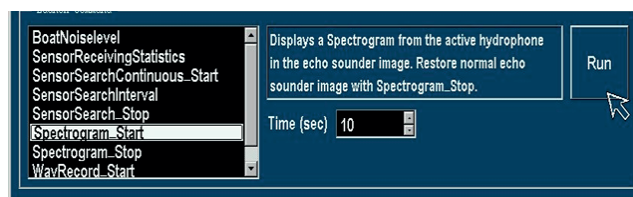
SPECTROGRAM - SOFTWARE V5.X

In the Service Console, different features can be chosen for scanning for boat codes, channels and noise.

The Spectrogram is useful for detecting noise from propellers, sonars and echo sounders.




1. To enter the Configuration screen, press 
2. Select the *Service* sheet 
3. Press *Console* 



Select *Spectrogram_Start*, set time in seconds and press *Run*

To restore to normal echo sounder image, run the command *Spectrogram_stop*.

The Spectrogram is shown in the echo sounder image. Click OK to leave the console and press  to get back to main screen. Select the echo sounder image.

Comments to the Echo Sounder Image:

1. Yellow dots are pings from a sensor transmitting on approx 42 kHz.
2. Shows the signal from a TrawlEye programmed as a high band TrawlEye.

