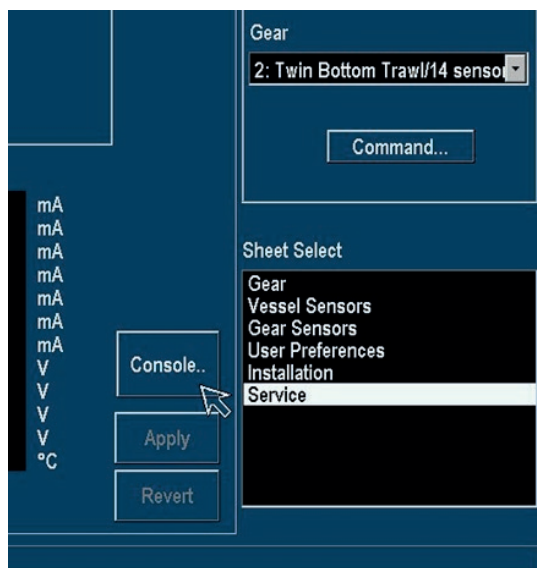





## SPECTROGRAM - SOFTWARE V4.X

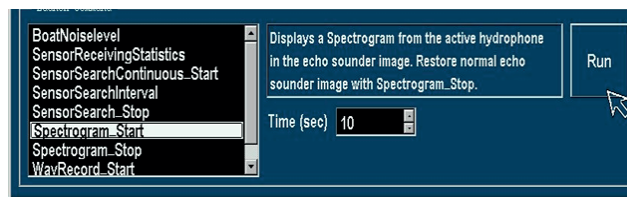
In the Service Console, different features can be chosen for scanning for boat codes, channels and noise.

The Spectrogram is useful for detecting noise from propellers, sonars and echo sounders.





1. Press the button to enter the configuration screen 
2. Locate the cursor on *Service* and press the Select button 
3. Locate the cursor on *Console* and press the Select button 

Select *Spectrogram\_Start*, set time in seconds and press *Run*



To restore to normal echo sounder image, run the command *Spectrogram\_stop*.

The Spectrogram is shown in the echo sounder image. Click OK to leave the console and press 

When in main screen, press  to get the echo sounder image.

Comments to the Echo Sounder Image:

1. Yellow dots are pings from a sensor transmitting on approx 42 kHz.
2. Shows the signals from a TrawlEye programmed as a high band TrawlEye.

