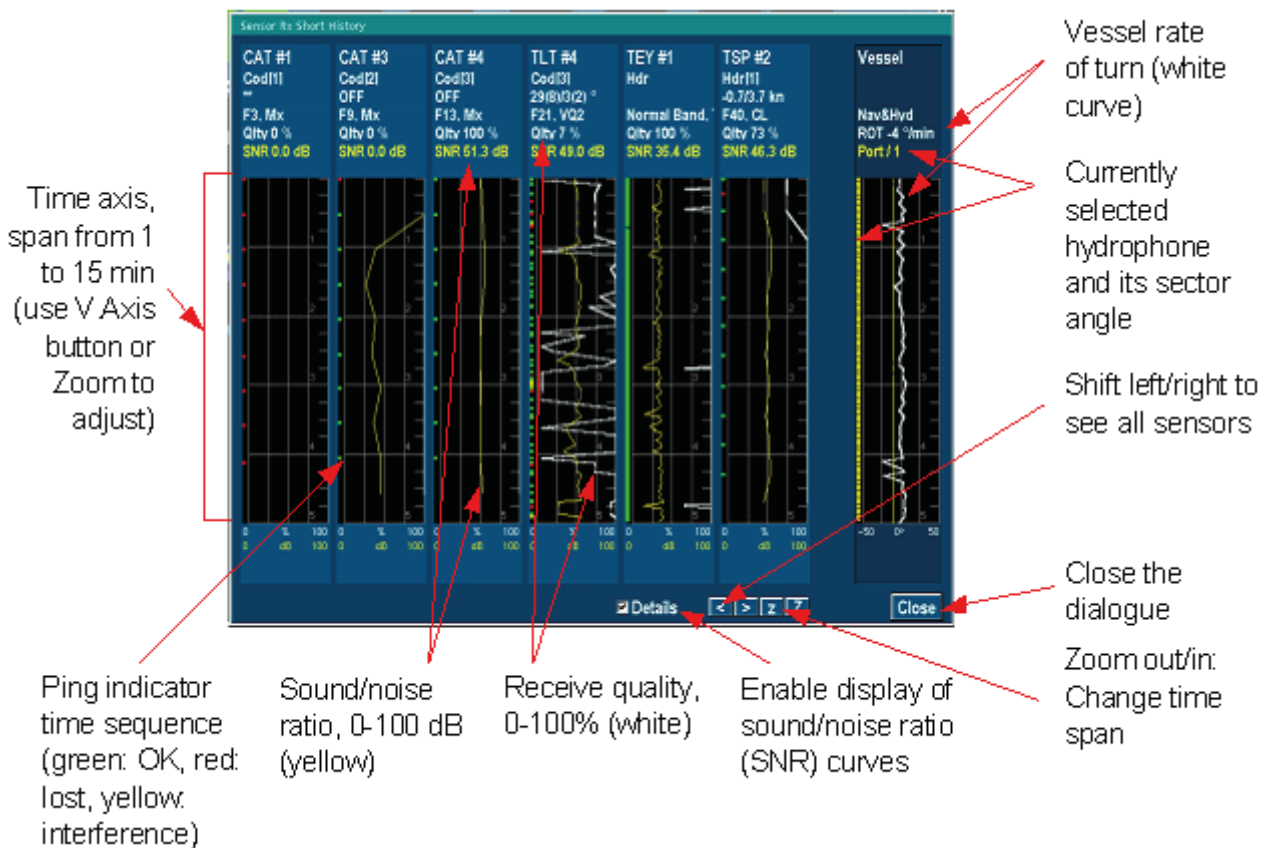
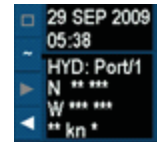


# RECEIVE DIALOGUE

The Receive Dialogue is opened by placing the cursor here

and press



The Receive Dialogue allows inspecting the receive conditions from all sensors for the last 15 minutes.

For each sensor uplink channel, the dialogue contains a diagram with a time axis. In the diagram the sensor pings are indicated as red ("lost"), green ("OK") or yellow ("interference") colors. In addition, the receive quality is indicated as a trace, with the range 0% to 100%. Optionally, one may also display a Sound/Noise Ratio (SNR) trace.

Another diagram shows which hydrophones have been used and the movements of the vessel in the same time period.