
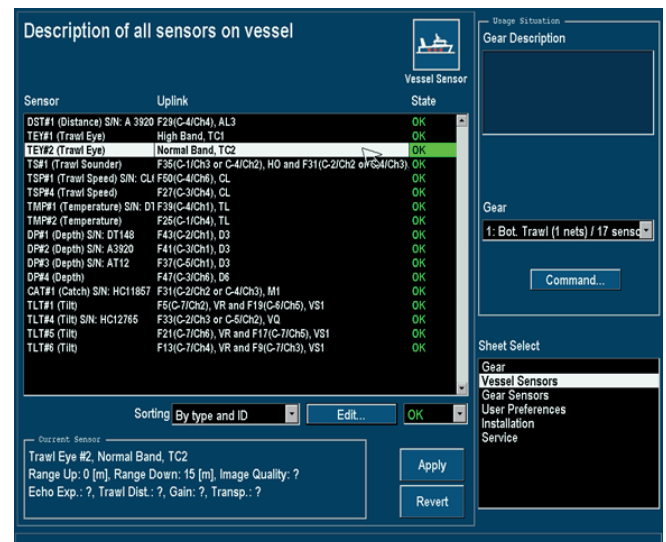


# PROGRAMMING THE TRAWLEYE SENSOR WITH SOFTWARE V4.X

Please refer to Reference Manual for more details.



1. Connect the cable 105026 from the SRU
2. Press button to enter the configuration sheet 
3. Select the Vessel Sensor sheet
4. Select the actual TrawlEye sensor
5. Go to *Edit*



6. Select *Program TrawlEye*
7. Check *Status* to ensure contact with the TrawlEye
8. Change the settings  
*Long Range* and *Best quality* gives short operation Time, while short range and *Worst quality* preserves battery capacity.
9. Press *Program*
10. Press *Close* when finished
11. Exit configuration

