

INSTALLING A NEW SENSOR

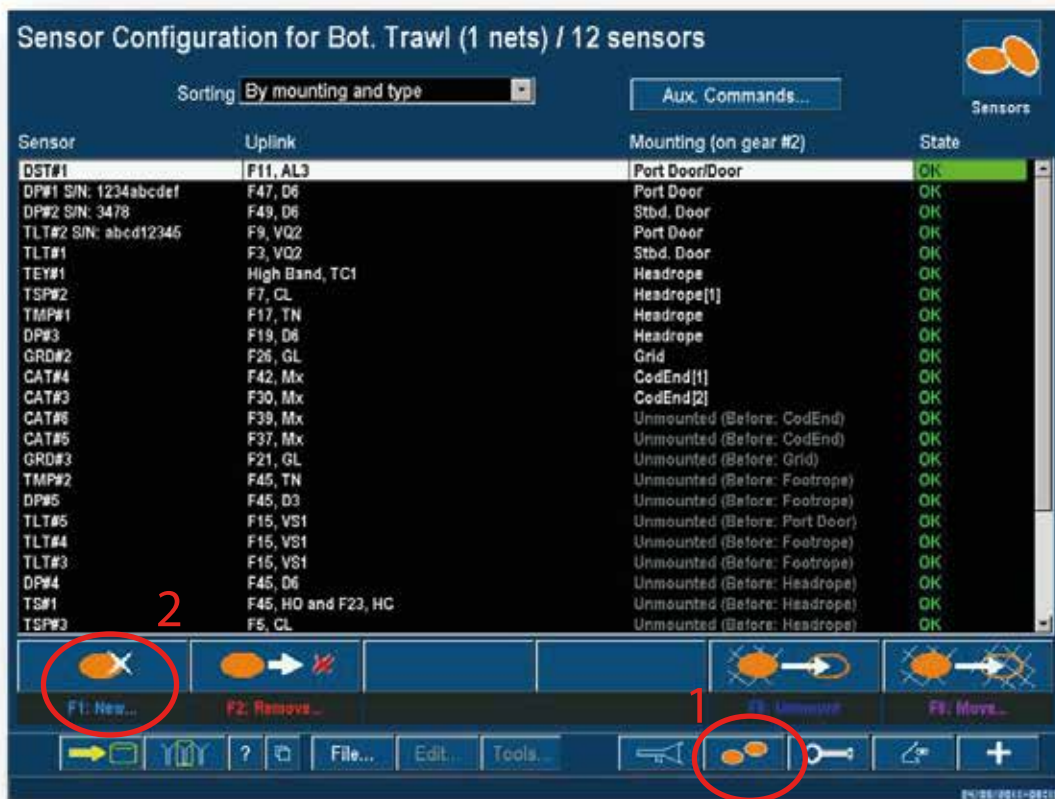
To be able to use a sensor, it is necessary to configure/declare the sensor in the system.

Important to know when configuring a new sensor:
Sensor type, Telegram and FID (vessel code and channel).
See Reference manual for more details.

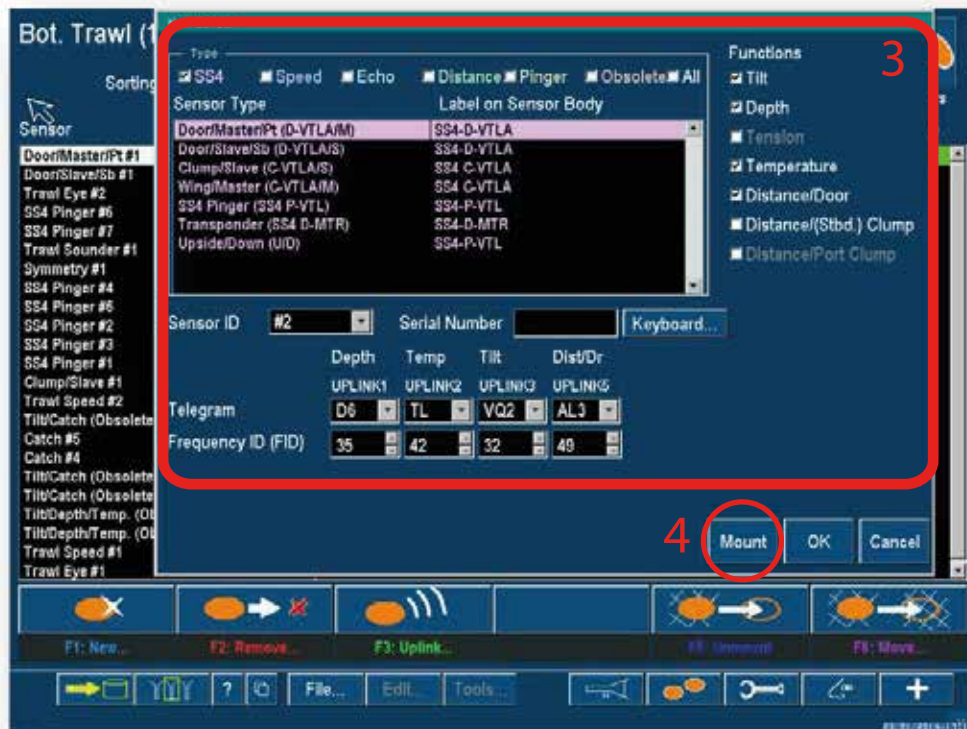
Enter configuration



1: Select "Sheet: Sensors"



2: Select "F1: New..." to open window "NEW SENSOR"



3: Select the following:

Type: Select type of sensor.

Functions: If an SS4 multifunctional sensor is selected; select the function(s) that the sensor is configured with.

Sensor ID: The identifying number of the sensor within the set of sensors of same type.

Serial number: Specify the serial number of the sensor; this simplifies the identification of the sensor. Use the Onscreen keyboard.



Telegram: The telegram describes the communication from sensor to vessel. Type of telegram type is marked on the label on the battery lid. On the new multifunctional sensors, this info is accessible and changeable with the charger QBC-X1

FrequencyID: The FID number identifies the frequency used to communicate with the vessel. The numbers are picked so that a separation of two or more gives no interference. If FID 25 is in use, Fid 27 is ok to use while FID 26 will interfere.

Boatcode/channel: Will automatically be updated when FID is selected. Boat code and channel was in use in the older systems with a limited number of frequencies available.

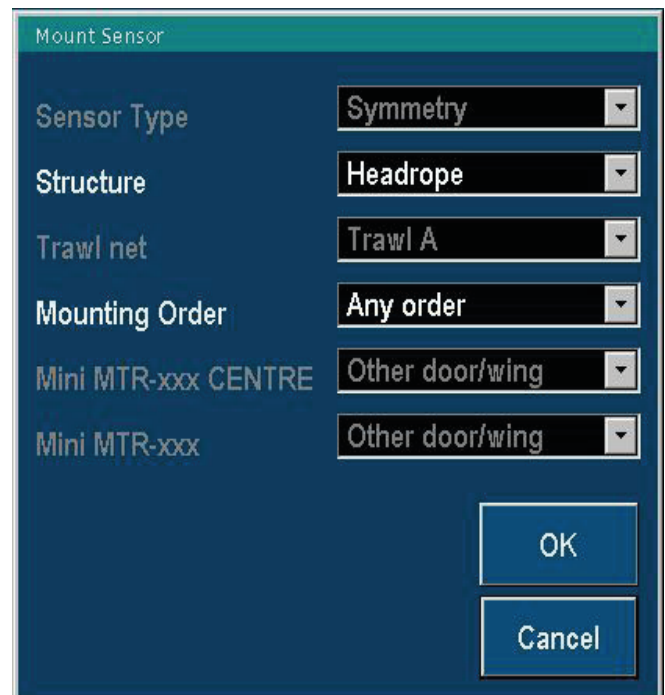
4: Select "Mount" to specify the mounting position for this sensor, or OK to save the configuration and return to the Sensor sheet.

If "Mount" is selected the Mount sensor appears. Set the following:

Trawl net:
Specify the net where the sensor shall be mounted.

Structure:
Specify which door or which part of the trawl net the sensor shall be mounted.

Mounting order:
For some sensor type's i.e. the catch sensor, the mounting order is important. For Catch sensors, number one is closest to the rear of the Codend.



Field	Value
Sensor Type	Symmetry
Structure	Headrope
Trawl net	Trawl A
Mounting Order	Any order
Mini MTR-xxx CENTRE	Other door/wing
Mini MTR-xxx	Other door/wing

Command buttons in the Sensor sheet



F1 : New. Specify type of sensor and uplink parameters.

F2 : Remove. Highlight the sensor to be removed and press F2.

F3 : Uplink. Highlight the sensor to be changed and press F3 to enter the Uplink dialogue.

F4 : Program. Highlight the trawl eye to be programmed and press F4 to enter the programming dialogue.

F5 : Unmount. Highlight the sensor to be unmounted and press F5. If the selected sensor is not mounted, this button will have the function "Mount"

F6 : Move. Highlight the sensor to be moved and press F6 to get the Mount sensor dialogue.