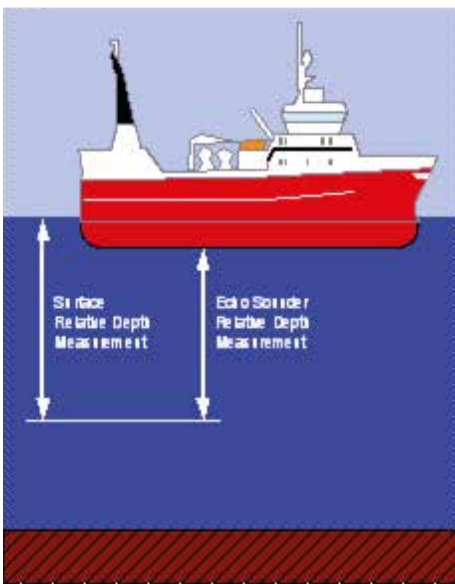


CALIBRATING DEPTH SENSOR

With the cursor located in the actual depth sensor box, press the properties button to open the dialogue box.
Press **Uplink** and you will get the calibration dialogue



Depth Sensor Calibration Modes



1. Submerge the depth sensor to 1 meter deeper than the sea surface or ES hydrophone.
2. Ensure that pings are received correctly, only green pings every third second.
3. Open the calibration dialogue and activate the **Calibrate!** button.
4. The **Pings to go** field should count down from 10.
5. When finished, the calibration offset will be calculated.
6. Click the **OK** button and the system will take the offset into use. This offset is for this sensor only.

If checked, sensor position should be 1 meter below the surface

Sensor offset

Remaining sensor pings to receive for the calibration to complete

Every depth sensor needs to be calibrated regularly, i.e. once a year.

If there is a lot of noise when calibrating it can be difficult to get 10 green pings in a row.

