

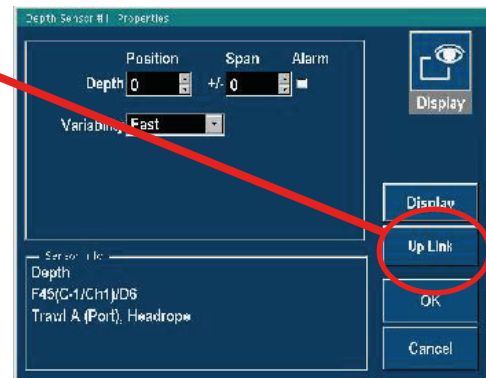
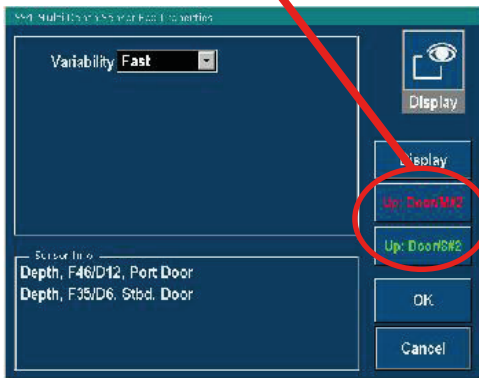
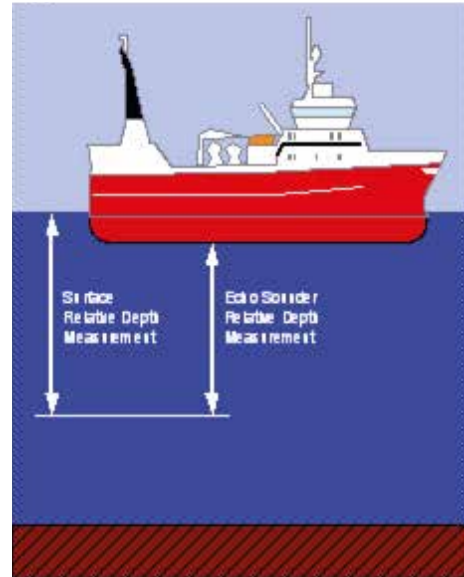
# CALIBRATING DEPTH SENSOR

1. Submerge the depth sensor to 1 meter deeper than the sea surface or ES hydrophone.
2. Ensure that pings are received correctly, only green pings every third second.  
With the cursor located in the actual depth sensor box, press the properties button to open the dialogue box.

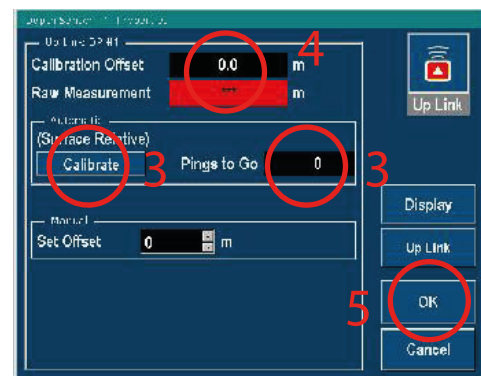
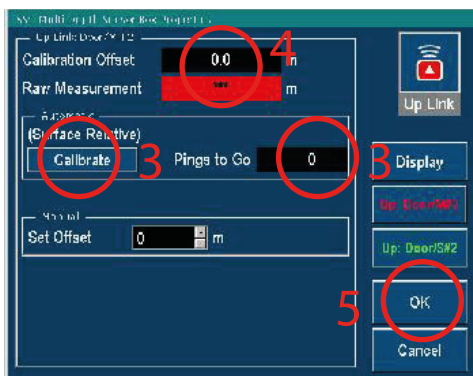


Press **Uplink** and you will get the calibration dialogue

## Depth Sensor Calibration Modes

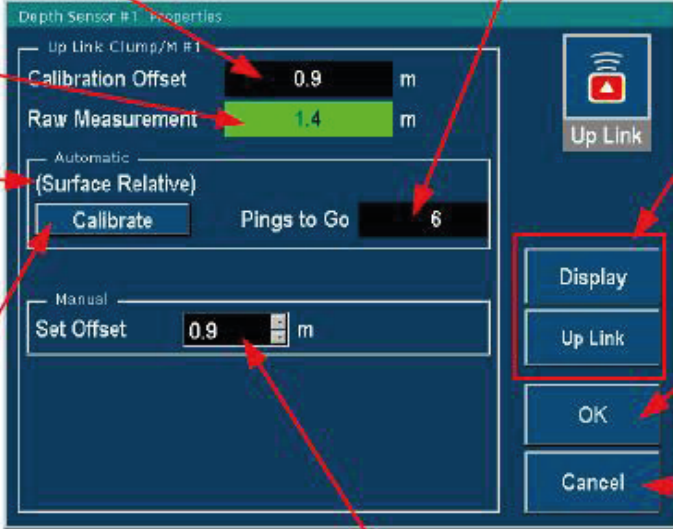


3. Press the "Calibrate" button and the "Pings to go" field should count down from 10.
4. When finished, the calibration offset will be calculated.
5. Click the OK button and the system will take the offset into use. This offset is for this sensor only.



# CALIBRATING DEPTH SENSOR

## Depth Sensor Box Properties Dialogue, Uplink Sheet



Resulting calibration offset remembered for this Depth sensor

Remaining sensor pings to receive for the calibration to complete.

The most recent measurement, without any calibration offset applied.

If "Surface Relative", sensor position should be 1 meter below the water surface.

If "Transducer Relative", it should be 1 meter below the echo sounder hydrophone.

Invoke calibration (assumes Depth sensor placed at 1 meter depth below surface or hydrophone)

Buttons to switch to the other sheet of this dialogue and back:

- \* **Display:** Display of sensor measurements.
- \* **Uplink:** Reception of sensor measurements. This sheet.

Exit and take any changed dialogue settings into use. Also saves changes to disk.

Exit and discard any changed dialogue settings

Manual adjustment of the Calibration Offset.